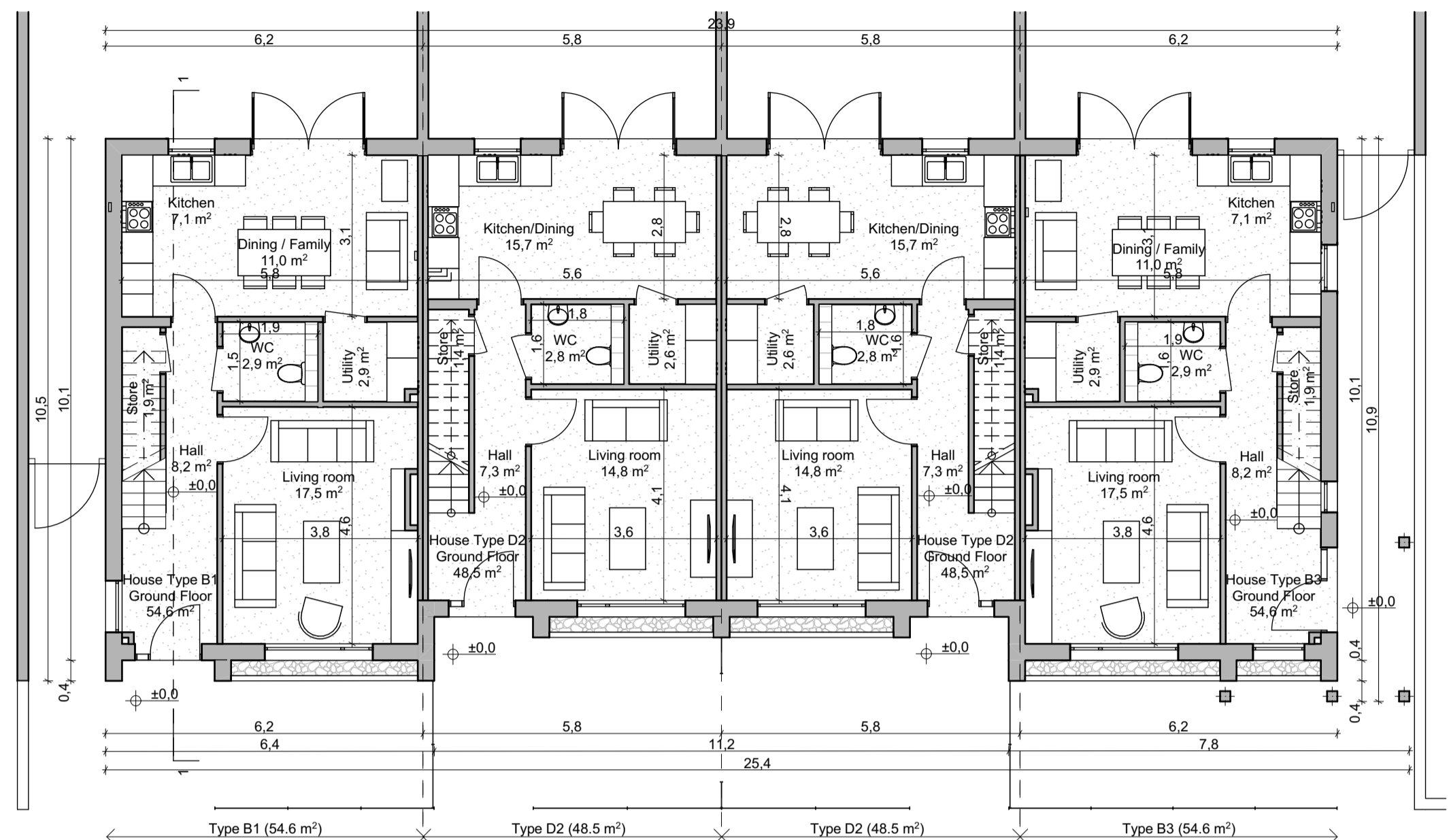
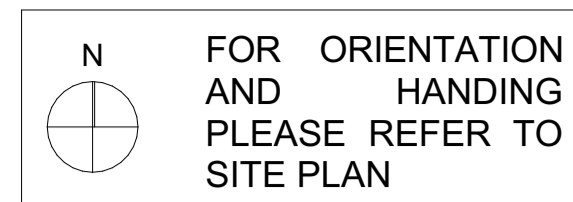


**HOUSE TYPE B1**  
3 Bed / 5 Person - End Terrace / Semi Detached - GFA: 106.4 m<sup>2</sup>

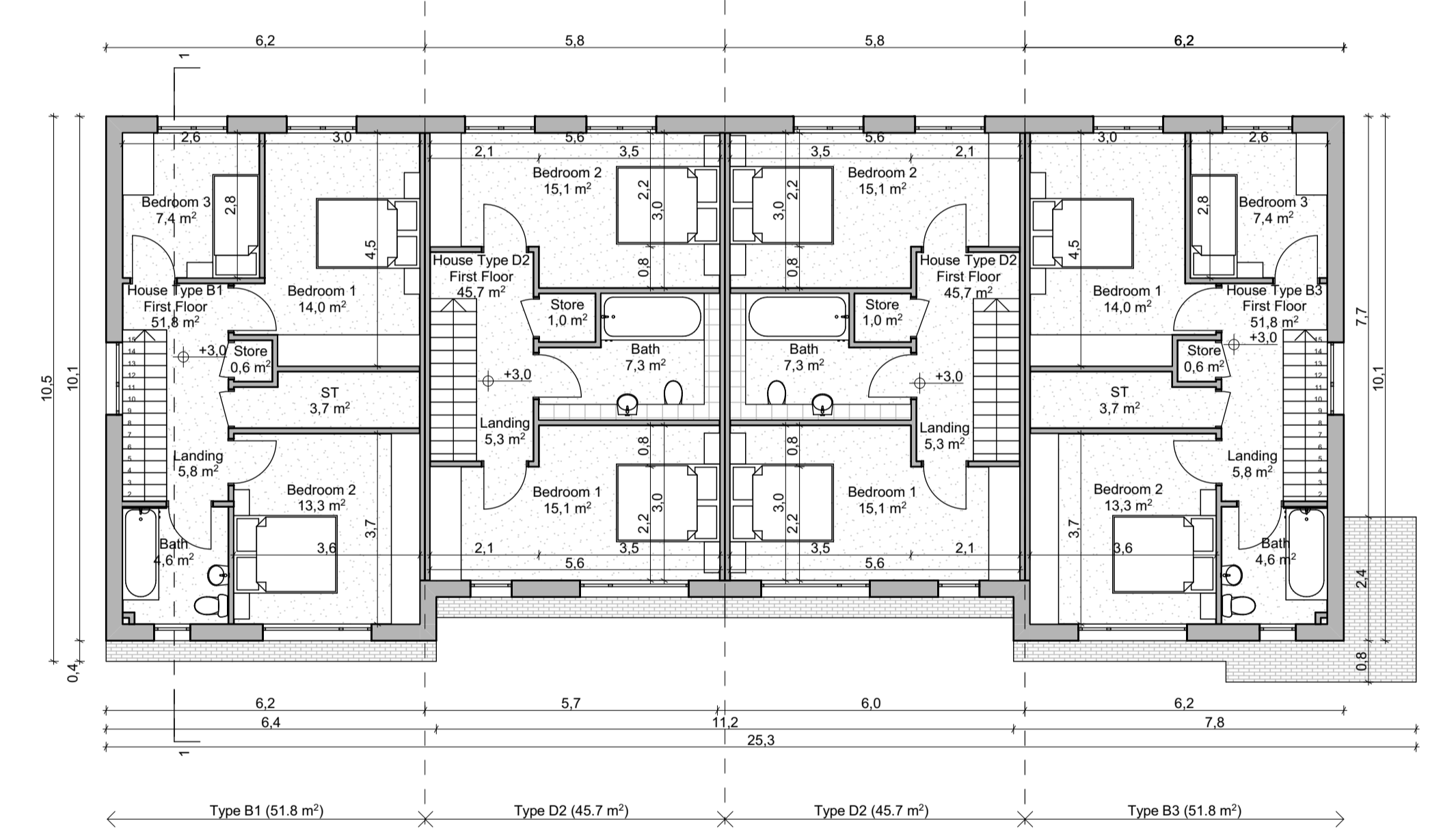
**HOUSE TYPE D2**  
2 Bed / 4 Person - Mid Terrace - GFA: 94.2 m<sup>2</sup>

**HOUSE TYPE B3**  
3 Bed / 5 Person - End Terrace / Semi Detached- GFA: 106.4 m<sup>2</sup>

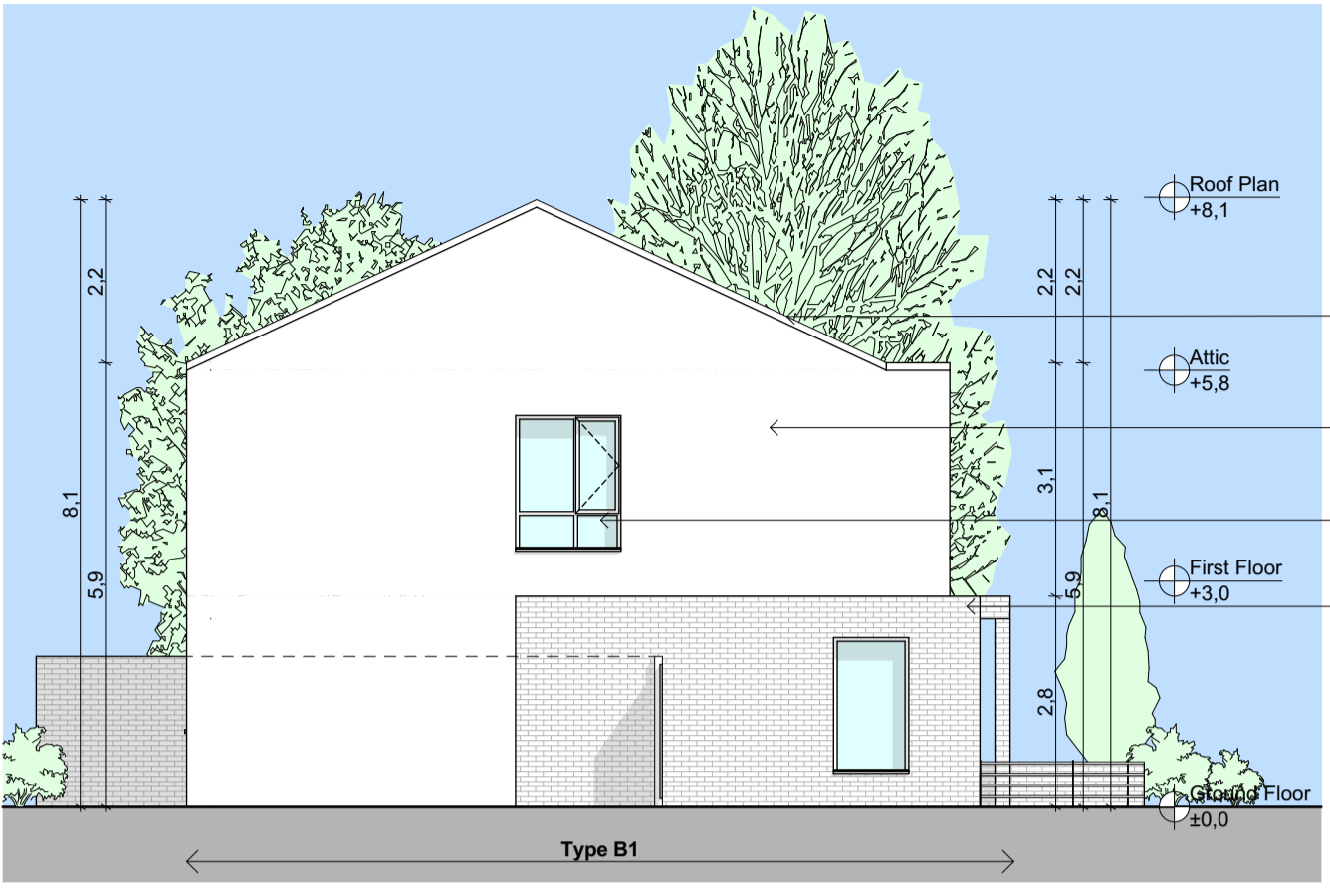
ALL DIMENSIONS AND LEVELS IN METERS, EXCEPT WHERE NOTED OTHERWISE



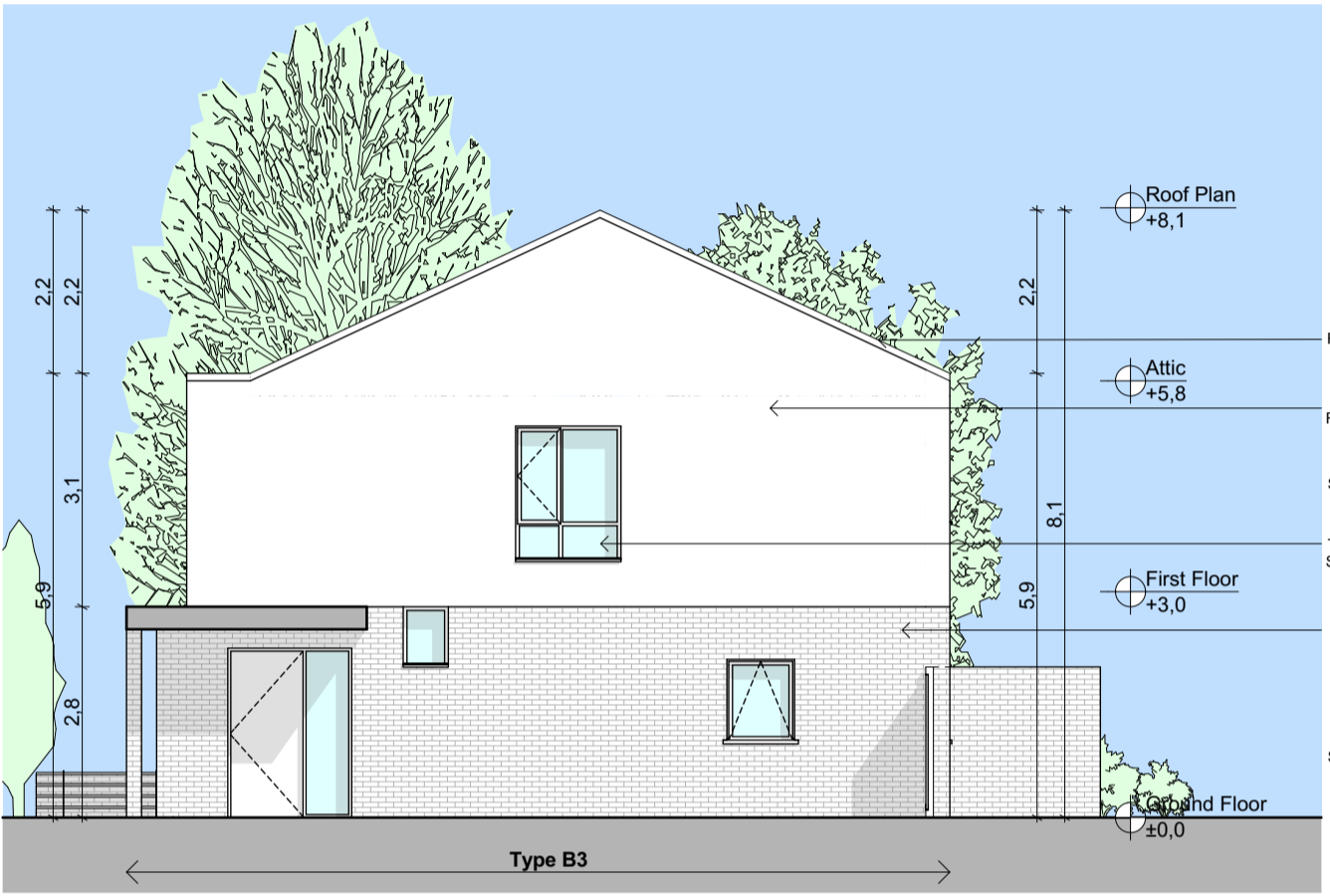
**Ground Floor**  
SCALE 1:100



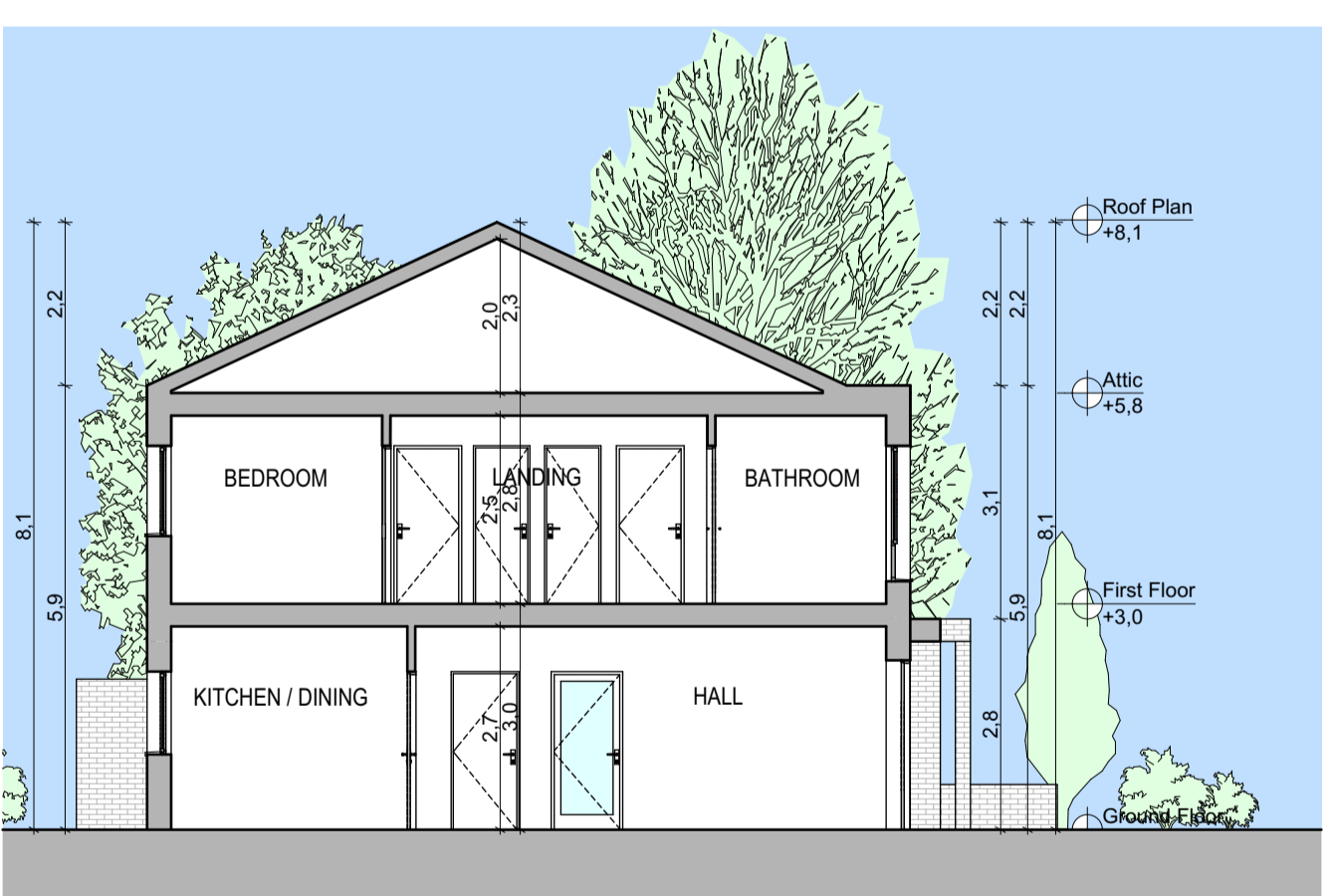
**First Floor**  
SCALE 1:100



**B1 Side Elevation**  
SCALE 1:100



**B3 Side Elevation**  
SCALE 1:100



**Typical Building Section through B1/B3 - Section 1**  
SCALE 1:100



**Front Elevation**  
SCALE 1:100



**Rear Elevation**  
SCALE 1:100



AXONOMETRIC VIEW SHOWING A TYPICAL CORNER CONDITION



NOTE: CHARACTER AREA 5 - LIGHT BROWN BRICK COMMON BOND (OR SIMILAR) FOR BRICK FINISHES - BEIGE RENDER FOR RENDER FINISHES - ALL BATHROOM WINDOWS TO HAVE FROSTED/OBSCURE GLAZING

HOUSE TYPE B1 - Individual Areas		HOUSE TYPE D2 - Individual Areas		HOUSE TYPE B3 - Individual Areas	
Zone Name	Area (m <sup>2</sup> )	Zone Name	Area (m <sup>2</sup> )	Zone Name	Area (m <sup>2</sup> )
Bath	4,6	Bath	7,3	Bath	4,6
Bedroom 1	14,0	Bedroom 1	15,1	Bedroom 1	14,0
Bedroom 2	13,3	Bedroom 2	15,1	Bedroom 2	13,3
Bedroom 3	7,4	Bedroom 3	7,3	Bedroom 3	7,4
Dining / Family	11,0	Kitchen/Dining	15,7	Dining / Family	11,0
Hall	8,2	Hall	5,3	Hall	8,2
Kitchen	7,1	Living room	14,8	Kitchen	7,1
Landing	5,8	Store	1,0	Landing	5,8
Living room	17,5	Store	1,4	Living room	17,5
ST	3,7	Utility	2,6	ST	3,7
Store	0,6	WC	2,8	Store	0,6
Store	1,9		88,4 m <sup>2</sup>	Store	1,9
Utility	2,9			Utility	2,9
WC	2,9			WC	2,9
	100,9 m <sup>2</sup>				100,9 m <sup>2</sup>

HOUSE TYPE B1 - GFA		HOUSE TYPE D2 - GFA		HOUSE TYPE B3 - GFA	
Level	GFA (m <sup>2</sup> )	Level	GFA (m <sup>2</sup> )	Level	GFA (m <sup>2</sup> )
First Floor	51,8	First Floor	45,7	First Floor	51,8
Ground Floor	54,6	Ground Floor	48,5	Ground Floor	54,6
	106,4 m <sup>2</sup>		94,2 m <sup>2</sup>		106,4 m <sup>2</sup>



**Keyplan**  
(NOT TO SCALE)